

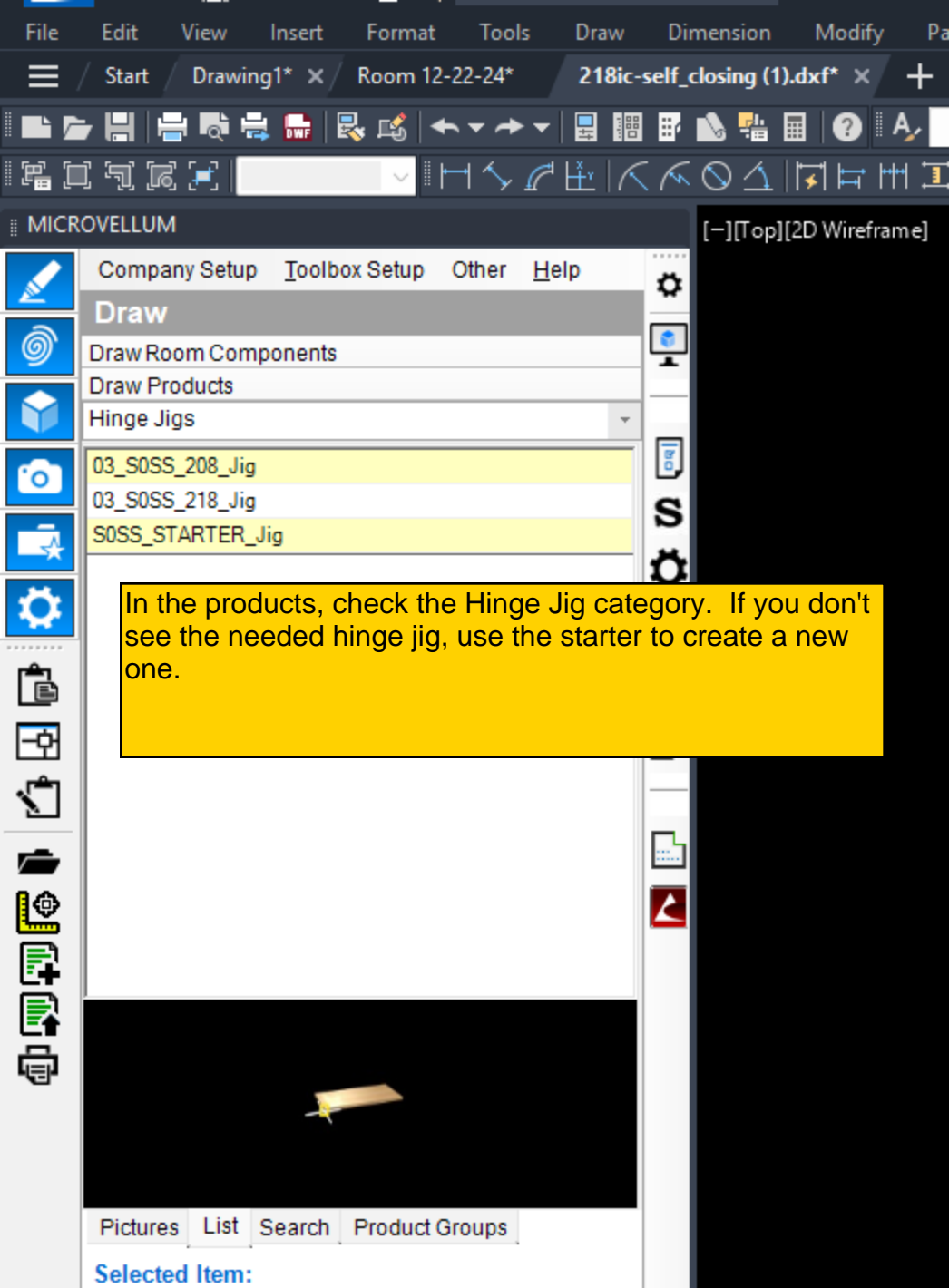
Concealed Hinges/SOSS Style

A concealed hinge that's also known as an invisible hinge because it's hidden from view when a door or cabinet is closed. They are used on passage doors

- Brands
 - SOSS
 - Purchase from www.epivots.com
 - Pros
 - Industry Standard
 - Many color options
 - Door Closer Options
 - Helpful Website - <https://www.soss.com/>
 - Cons
 - No Adjustment in hinge
 - Startec (Adjustable)
 - purchase from Hafele
 - Tectus (Adjustable)
 - purchase from Hafele
 - Hafele 3-way Adjustable (Adjustable)
 - purchase from Hafele

OCM Rules for hinge templates

- Always make the jig!
- Since concealed hinges are typically 2 depths, 2 jigs are always needed. ID and OD
- Jigs to be the exact size of cutout, cabinet makers will use a template bearing router bit.
- Always use an edge block as a stop
- Modify jigs to layout all hinge cutouts per door (example – 3 hinges cutout for door that gets 3 hinges)
-



In the products, check the Hinge Jig category. If you don't see the needed hinge jig, use the starter to create a new one.



B19 03_S0SS_208_Jig

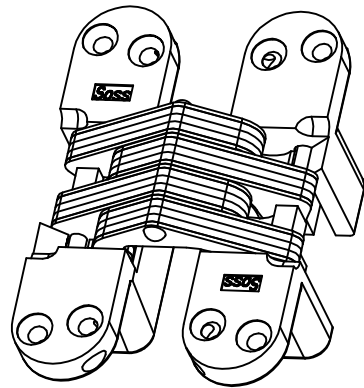
L*	Defined Name	Value	Control Type	Help Text	Validation Code	Control Type Data	Number / Dimension	Color	Mirrored Value	Picture	Hide Prompt	Hide On Reports
1	Width	12.0	1	Width of Product								
2	Height	6.0	1	Height of Product							1	1
3	Depth	6.0	10	Depth of Product								
4	Stop On Left	0.0	2									
5	Stop On Right	1.0	3									
6	Material Selection	#2_.75 PB TEMPLATE	70	Select material for part.								
7	Material Thickness	0.75	6									
8	Hinge Tab	0.1543	10									
9	Hinge Outside Length	2.752	10									
10	Hinge Inside Length	1.3438	10									
11	Hinge Width	0.629	10									
12	Center Line Offset	0.4688	10								1	
13	Second Jig Offset	12.0	10								1	
14	OD Plate	1.0	4									
15	OD Stop	1.0	4									
16	ID Plate	1.0	4									
17	ID Stop	1.0	4									
18	Is Buyout	0.0	4	Check box to indicate product or subassembly is a Buyout item. This will cause all parts, edgebanding, and hardware to be considered							1	
19	ProductName	03_S0SS_208_Jig	10									
20	Product Price Total	228.13	6	Total calculated product price. This includes adjustment m	N						1	
21	Product Price	151.58	6	Calculated Manufacturing Price for this product based on c	N			1			1	
22	Product Price Adjustment	0.0	6	Enter an additional dollar amount to add or remove to the c	N			3			1	
23	Product Price Markup	10.0	6	Enter a percentage to add or remove -20 -19 -18 -17 -16 -1	N						1	
24	Product Price Overhead	15.16	6	Calculated price for Overhead to add or remove to the ove	N			3			1	
25	Product Price Overhead M	10.0	6	Enter a percentage for Overhead to -20 -19 -18 -17 -16 -1	N						1	
26	Product Price Engineering	13.64	6	Calculated price for Engineering to add or remove to the o	N			3			1	
27	Product Price Engineering	9.0	6	Enter a percentage for Engineering t -20 -19 -18 -17 -16 -1	N						1	
28	Product Price Manufactur	0.075	6	Enter tax rate value for Manufacturing to be added to produ	N			5			1	
29	Product Price Shipping	13.04	6	Calculated price for Shipping to add or remove to the overa	N			3			1	
30	Product Price Shipping M	8.0	6	Enter a shipping percentage to add c -20 -19 -18 -17 -16 -1	N						1	
31	Product Price Shipping Ta	0.075	6	Enter tax rate value for Shipping to be added to product pr	N			5			1	
32	Product Price Install	19.55	6	Calculated price for Install to add or remove to the overall p	N			3			1	
33	Product Price Install Mark	12.0	6	Enter an install percentage to add or -20 -19 -18 -17 -16 -1	N						1	
34	Product Price Install Tax	0.075	6	Enter tax rate value for Install to be added to product price	N			5			1	
35	Product Cost Total	183.67	6	Total calculated product cost.	N						1	
36	Product Cost Adjustment	0.0	6	Enter an additional dollar amount to add or remove to the c	N			3			1	
37	Product Cost Material	50.0	6	Micromanager will calculate and populate this value.	N			3			1	
38	Product Cost Material Ma	5.0	6	Enter a percentage for Material to ac -20 -19 -18 -17 -16 -1	N						1	

Once the starter has been selected, open the edit design data.
Change the noted values with the correct hardware data, see next page

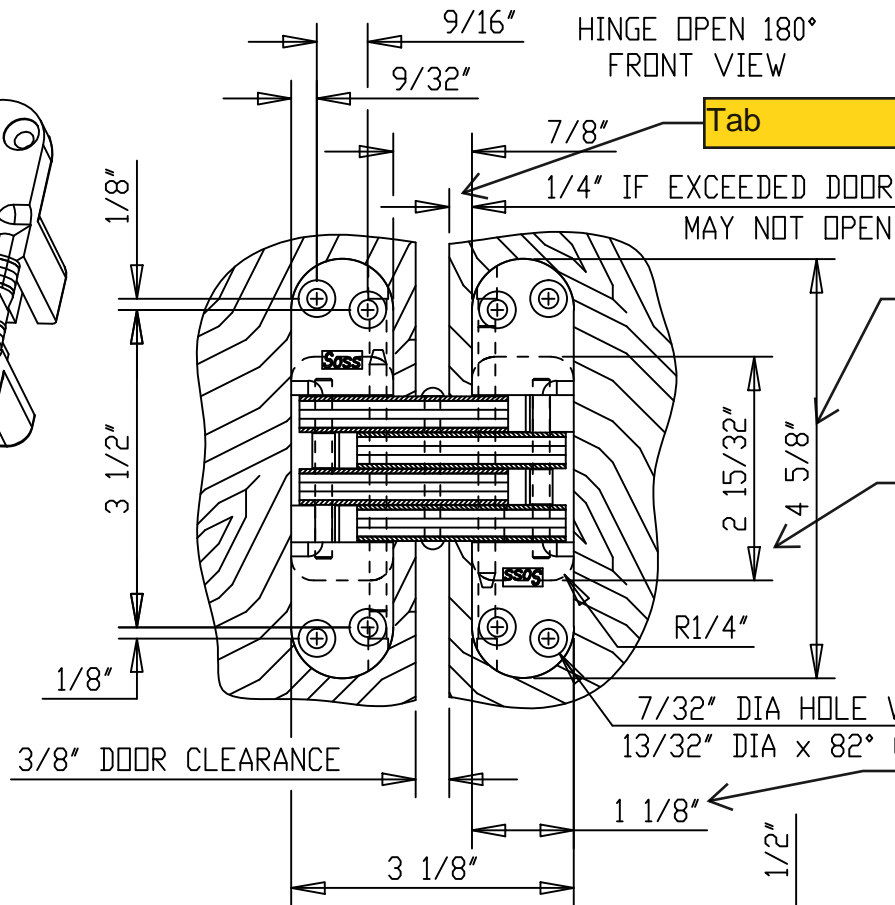
◀ ▶ 🔍 CutParts HardwareParts Subassemblies Prompts

Subassembly Save Level Legend
Project Level Unique Row Level Product Level

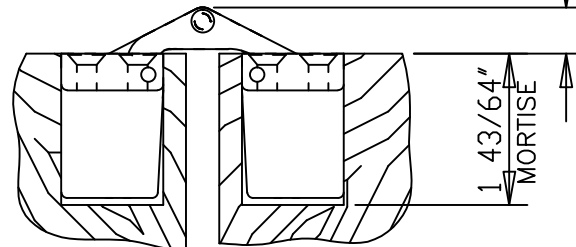
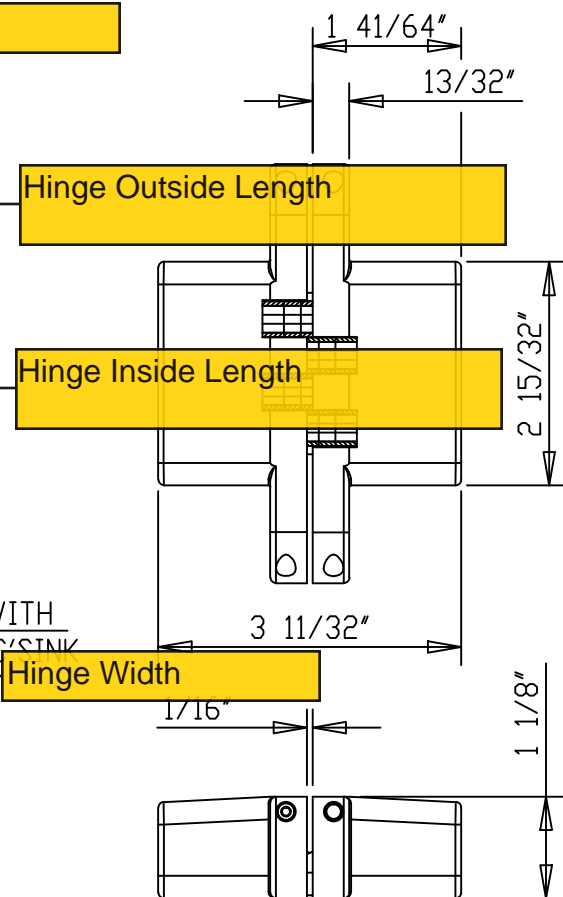
Save & Redraw Save & Close Save, Close & Redraw Close



HINGE OPEN 180°
ISOMETRIC VIEW

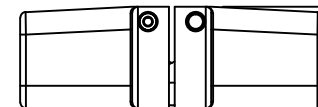


HINGE CLOSED
FRONT VIEW CUT AWAY



HINGE OPEN 180°
TOP VIEW CUT AWAY

HINGE CLOSED
TOP VIEW CUT AWAY



SUPPLIED:
WOOD SCREW
#10 x 1-1/2"
SPECIAL ORDER:
MACH. SCREW
#10-24 x 1"

MIN. MATERIAL THICKNESS IS 1-3/4"
DO NOT SCALE DRAWING
ALL DIMENSIONS ARE IN INCH
DOOR CLEARANCE REDUCES TO 1/64" WHILE CLOSING
SEE DWG# 4477-C IF ADDING MATERIAL TO DOOR FACE AND/OR FRAME FACE

UIP ©Copyright 2008
Universal Industrial Products, Inc.
One Coreway Drive
Pioneer, Ohio 43554-0628

HINGE TEMPLATE

#218 SOSS INVISIBLE HINGE

SCALE: 1/2" = 1"

DRAWN BY: LHH

DATE: 5/01/11

DRAWING # 218

